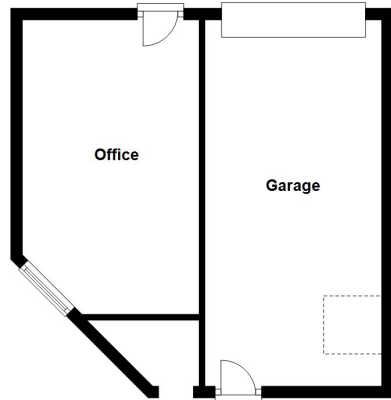
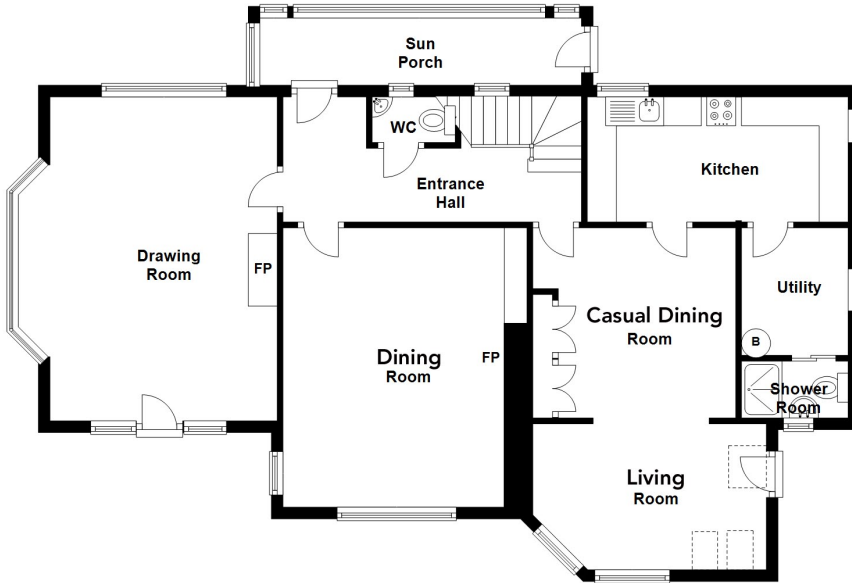


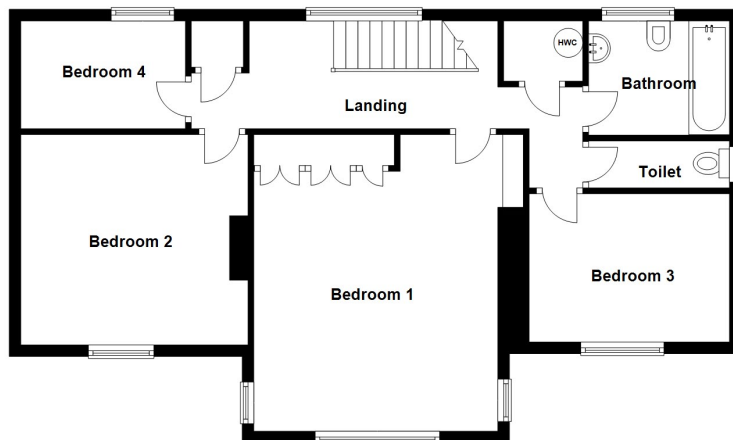
Ground Floor

Approx. 101.1 sq. metres (1088.5 sq. feet)



First Floor

Approx. 74.3 sq. metres (799.5 sq. feet)



Total area: approx. 175.4 sq. metres (1888.0 sq. feet)

For illustrative purposes only. Not to scale. Whilst every effort has been made to ensure the accuracy of the floor plan all measurements are approximate and no responsibility is taken for any error, omission or measurement. Plan produced using PlanUp.

48 Church Road, Helens Bay